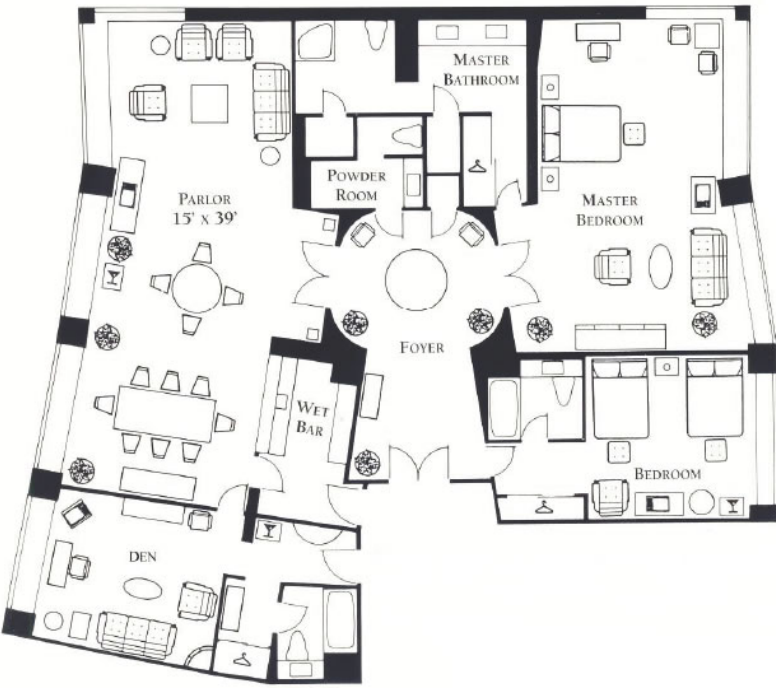
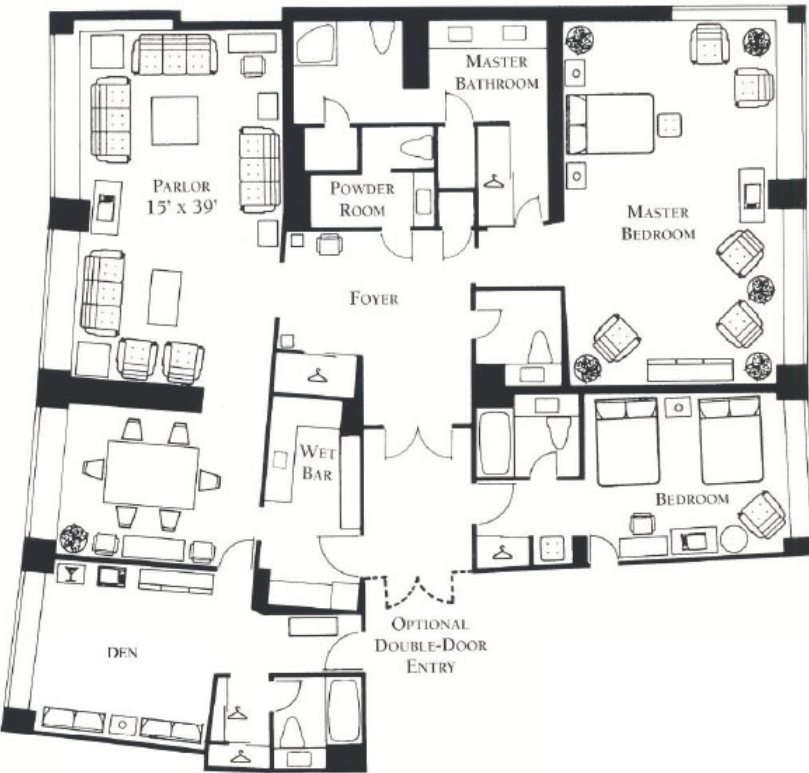


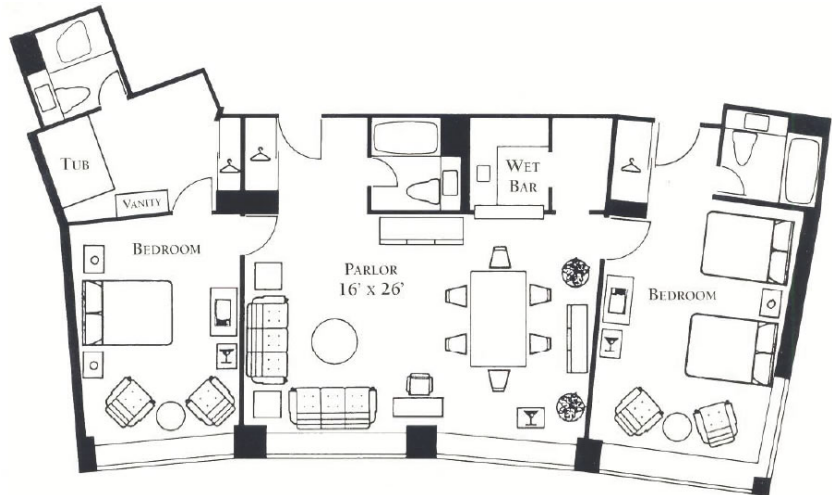
## Description and Diagrams of the Hilton Washington Hotel Suites

The following are suite diagrams and descriptions for the Hilton Washington. The floor plans are of typical suites in each category. Please keep in mind that the actual suite may vary slightly from the diagrams provided.

Suite Description	Suite Floor Plan
<p><b><u>Presidential Suite (2 rooms)</u></b></p> <p>The PRESIDENTIAL SUITE at the Hilton Washington has a contemporary motif, with a truly classic, varied and comfortable design. A magnificent foyer of white marble at the entrance of the suite leads into an elegant and spacious neo-classical parlor. In the immediate parlor area, a wet bar is easily accessible for entertaining guests. Two bedrooms, three full bathrooms and a powder room, complete the suite, establishing the perfect blend of comfort and functionality.</p>	<p><b><u>Presidential A</u></b></p>  <p>The Presidential A floor plan features a central foyer with a circular area. To the left is a large parlor (15' x 39') with a dining table and chairs. Below the parlor is a den with a sofa and chairs. A wet bar is located between the parlor and the den. To the right of the foyer is a master bedroom with a large bed, a smaller bedroom with two beds, a powder room, and a master bathroom. The layout is symmetrical around the central foyer.</p>
	<p><b><u>Presidential B</u></b></p>  <p>The Presidential B floor plan is very similar to Presidential A, but it includes an 'OPTIONAL DOUBLE-DOOR ENTRY' at the bottom center of the suite, providing an alternative access point to the central foyer. The rest of the layout, including the parlor, den, wet bar, bedrooms, and bathrooms, remains the same as in Presidential A.</p>

**Chief of State (1 room)**

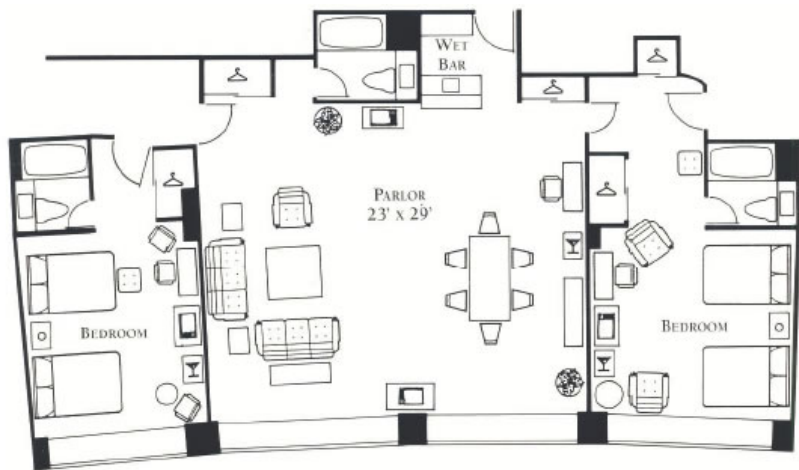
The CHIEF OF STAFF SUITE provides a contemporary motif and offers a breathtaking panoramic view of the Washington DC skyline. Complete with a spacious parlor room and a wet bar, this suite offers two guestrooms, one King Bedroom and an exceptionally large Double Bed Guestroom.



**Solar Suite (9 rooms)**

Bathed in warm colors and illuminated well, the SOLAR SUITE is the perfect place to impress a VIP or to simply get away and be catered to. The suite offers a spectacular view of the city and displays the fine Hilton tradition as its décor is inviting and richly designed. Opening into a large parlor with a wet bar conveniently located directly off the living area, the suite features a dining table for six, and beautiful, spacious bedrooms.

The SOLAR SUITE can accommodate 60-70 people standing.



**74 Type Room (6 rooms)**

Featuring a comprehensive array of thoughtful amenities, unparalleled comfort, and impeccable décor, The 74 TYPE SUITE is perfect for a congenial gathering with friends or business associates. To the left of the foyer is a formal dining room with a large dining table suitable for small meetings of eight and ideal for a board meeting. The parlor is as large as the dining area and is ideal for conducting business, entertaining, or relaxing.

The 74 TYPE SUITE can accommodate 60-70 people standing.



**Ann Landers (1 room)**

Renown columnist Ann Landers, designer of The ANN LANDERS SUITE, has created a contemporary masterpiece, with a dining area for four, a living area with wet bar, and a spacious parlor for entertaining. There is a king room attached to the parlor, with a large bathroom and comprehensive array of amenities.

The ANN LANDERS SUITE can accommodate 10-15 guests standing.



**Executive Suite (26 rooms)**

The motif of the EXECUTIVE SUITE is the traditional style with a comfortable parlor area that offers a full wet bar and seating for six guests. The suite features one double/double bedroom, a spectacular view of the city, and a relaxing atmosphere.

The EXECUTIVE SUITE can accommodate 10-15 people standing.



**Junior Executive Suite (8 rooms)**

The Hilton Washington's JUNIOR EXECUTIVE SUITES are situated throughout the hotel. The motif is contemporary, offering a variety of color schemes in rich mahogany, rose, gold, or blue. All parlors offer a comfortable seating area for six to eight. In each suite there is a full wet bar and each parlor also offers a large bath and a couch, which converts into a single bed.

The JUNIOR EXECUTIVE SUITE can accommodate 10-15 guests standing.

